

Recording from On-Line Radio

Recording from On-Line-Radio:

Open any On-Line radio player and setup as required for playing music.

Open Total Recorder. <http://www.highcriteria.com/> (Fig. TR02.bmp)

Connect external Audio Junction box as per (Fig. AudioBussHookup.bmp) & (Fig. TR06.bmp)

IMPORTANT:

The computer volume slider must be set below 1/3 to prevent feedback and over driving the "Line-In" input to the sound card.

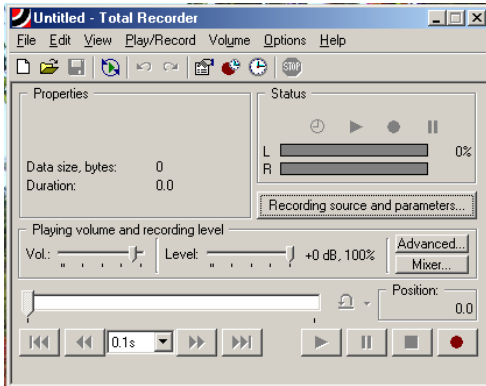


Fig. TR02.bmp

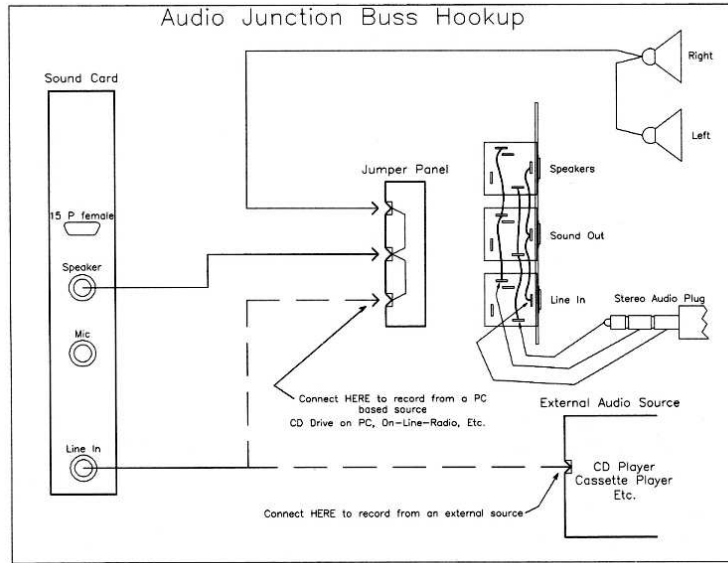


Fig. AudioBussHookup.bmp

External Audio Junction box.



Fig. TR06.bmp

Total Recorder Setup:

From the "Total Recorder" main window.. (TR02.bmp) Click...

[Recording Source & Parameters](button) Set as per.. (Fig. TR03.bmp)

On the "Recording Source & Parameters" window select [Change]

Gives.. (Fig. TR04.bmp) Set as shown.

After setting up as desired.. [ok] [ok]

Returns to Total Recorder main window. (Fig. TR02.bmp)

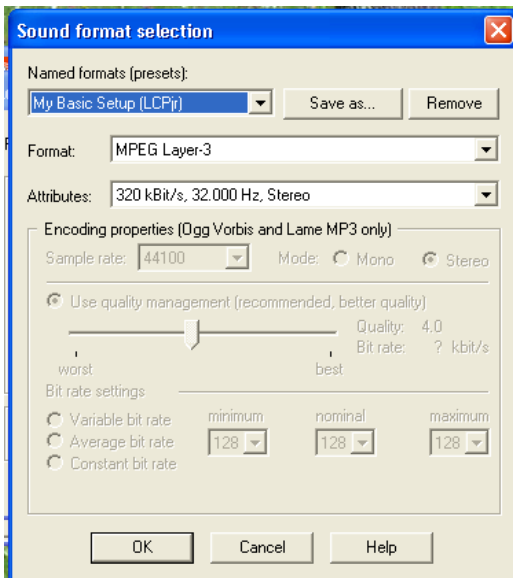


Fig. TR04.bmp

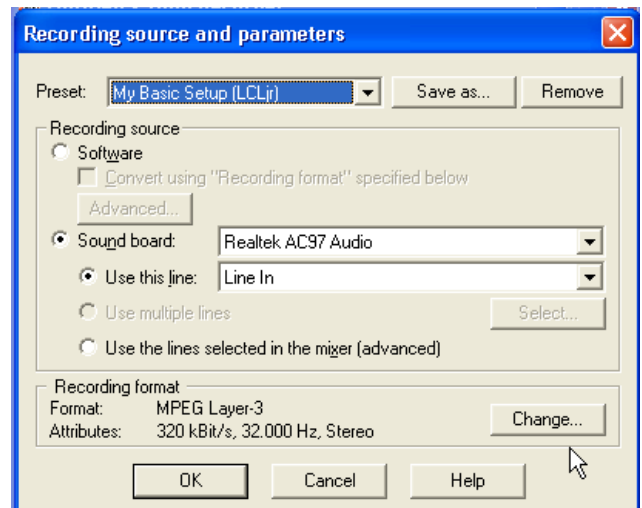


Fig. TR03.bmp

Continued on next page.

Recording from On-Line Radio

Total Recorder Setup: Continued from previous page.

Make sure the “External Audio Junction” box is connected as follows: Fig. AudioBussHookup.bmp & (Fig. TR06.bmp) on previous page.

Set Source switch to..... “Internal” position (Sound from the computer Speaker/Line-in source.)
System Speakers connectedto..... J-Box jack = [Speaker]
P.C. sound card “Speaker Out” ..to.... J-Box jack = [Speaker Out]
P.C. sound card “Line In”to..... J-Box jack = [Line In]

Note: If recording from an external source, like a Phonograph, Cassette Player etc. the switch is placed in the “Ext.” position and the player or Phonograph is connected to the “Ext. Audio” connector located under the switch. This allows the “Line In” to accept signals from an external source.

Start playing a selection on the On-Line Radio. Set recording levels on Total Recorder.

Click on [●] Record button (Fig.TR02.bmp) to start recording.

Adjust bar indicators to desired level for sufficient sound but to prevent clipping using “Level” & “Vol.” sliders (Fig. TR07.bmp)

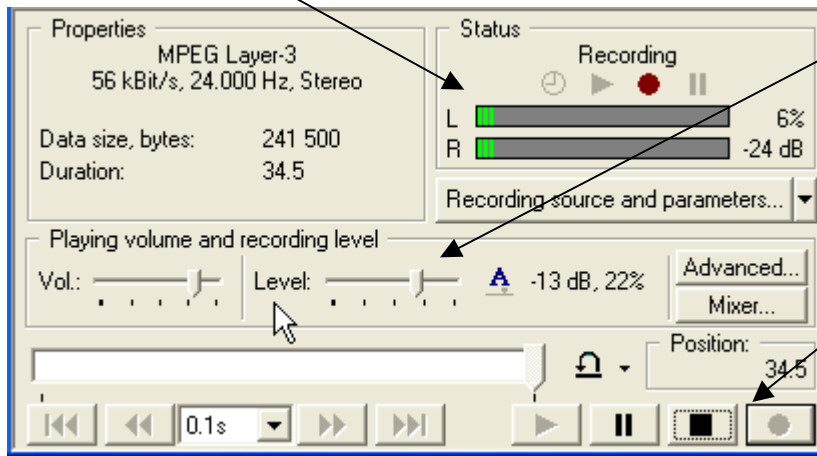


Fig. TR07.bmp

Use the Radio “Play” controls to Start / Stop Radio.



Fig. MMSetup12.bmp

Use the Total Recorder buttons to control Start / Stop on the Recorder.

This button changes depending if Total Recorder is Recording (Black to stop recording) or if it's ready to start recording (Red) (See Fig.TR02.bmp)

When all settings are completed, proceed with a recording.