

# Startup Cleaning

**Initial Information:** The purpose of this instruction is to limit the number of programs running in the background.

When Windows starts, the Registry starts a number of “ Background Programs “

These programs can be viewed by running MSCONFIG.

[ Start ] [ Run ] type.. [ MSCONFIG ] [ ok ] select.. [ Startup ](tab) (See Fig...Startup-01.bmp )

Program listings may vary with the type of programs installed on a particular computer.

Many programs, when installed, add to the listings in the MSCONFIG – Startup

These run when Windows XP starts up.

Many DO NOT need to be running at all.

If not cleaned up, they utilize a lot of computer resources.

One simple way to stop them from running is to simply “Uncheck” them in MSCONFIG – Startup.

They can be rechecked if needed.

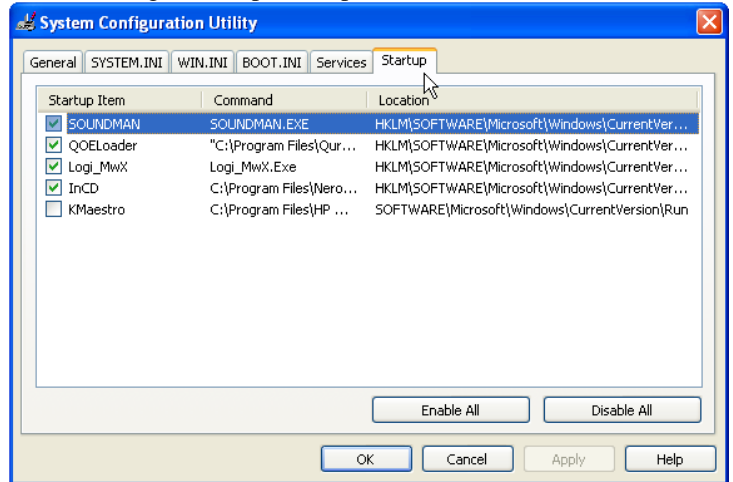


Fig.Startup-01.bmp

Typical Listing

## Procedure to disable a Startup Item in MSCONFIG:

1st.. Make a “System Restore” point. ( In case something goes wrong, you can always restore to before changes were made. )

[ Start ] [ All Programs ] [ Accessories ] [ System Tools ] [ System Restore ]

(●) Create a restore point [ Next ] Type a description as desired. Ex: “ System OK ! “ [ Create ] [ Close ]

### To restore to a Restore Point:

Open “System Restore” ( see above )

(●) Restore my computer to an earlier time.

[ Next ] select a time from the listing and click..[ Next ]

NOTE: May take a while. Computer reboots.

2d.. Open MSCONFIG – Startup. ( see above ) Determine which listings to uncheck.

Pick and drag the “Separator Line” to right to enable all of the “ Command” to be viewed.

Determine which commands you want to remove.

Ref. Example below.

The file “*Logi\_MwX.exe*” can be looked up using GOOGLE search engine.

Open Internet Explorer. address <http://www.google.com/>

In the search box...

Enter... *Logi\_MwX.exe* [ Ent ]

The first link returns this...

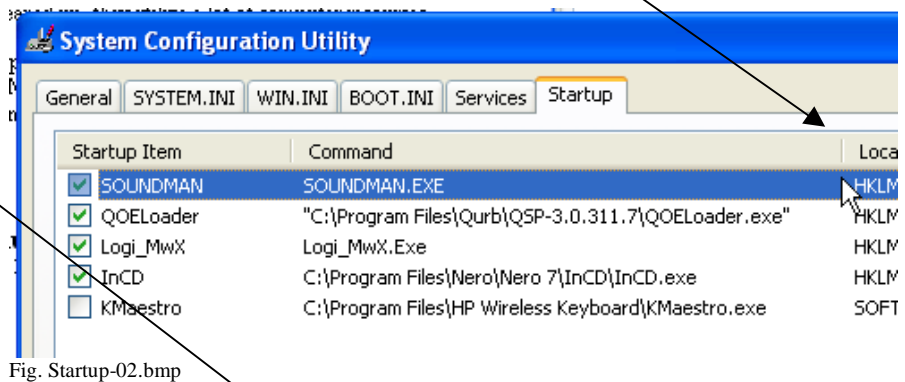


Fig. Startup-02.bmp

Example:

<input checked="" type="checkbox"/>	Logi_MwX	Logi_MwX.Exe
<input checked="" type="checkbox"/>	InCD	C:\Program Files\Nero\Nero 7\InCD\InCD.exe

### Description:

logi\_mwx.exe is a process which is associated with Logitech MouseWare. It loads software for non-standard mouse buttons and should be left alone whilst these non-standard buttons are used.

If these functions are not needed, Uncheck that command in Startup.

Continued next page.

# Startup Cleaning

If after “ Unchecking “ an item in MSCONFIG – Startup, it’s determined that command is Definitely not needed, that command can be Permanently removed by editing the Registry.

**Editing the Registry can cause the system to not function properly if you make a mistake and remove the wrong items. Proceed with caution.**

Always make a “ System Restore “ point before making changes to registry. ( see page 1 for how to do a “ System Restore “ )

Before editing the Registry, create a Registry Export file as follows. This file can be used to restore the Registry to it’s previous condition.

## Registry Export:

Open the Registry Editor.... [ Start ] [ Run ] type .. [ regedit ] [ ok ]

When the Registry editor window comes up, navigate to *HKEY\_LOCAL\_MACHINE\Software\Microsoft\Windows\CurrentVersion\Run*

Highlight [ \Run ] ( see Fig. Startup-05.bmp )

NOTE: This location can be changed to backup any location in the Registry.

Select... [ File ] [ Export ] ( see Fig. Startup-04.bmp)

When the “ Export Registry File ” save window comes up Select a location on your hard drive and give a name to the Export file and save it.

This file can be used to restore the registry to its previous condition if necessary by Double-Clicking on it.

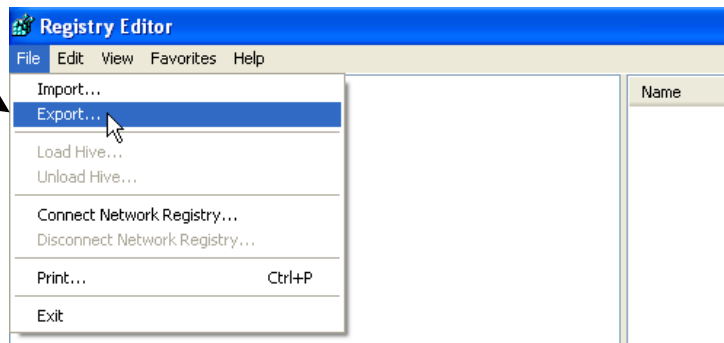


Fig. Startup-04.bmp

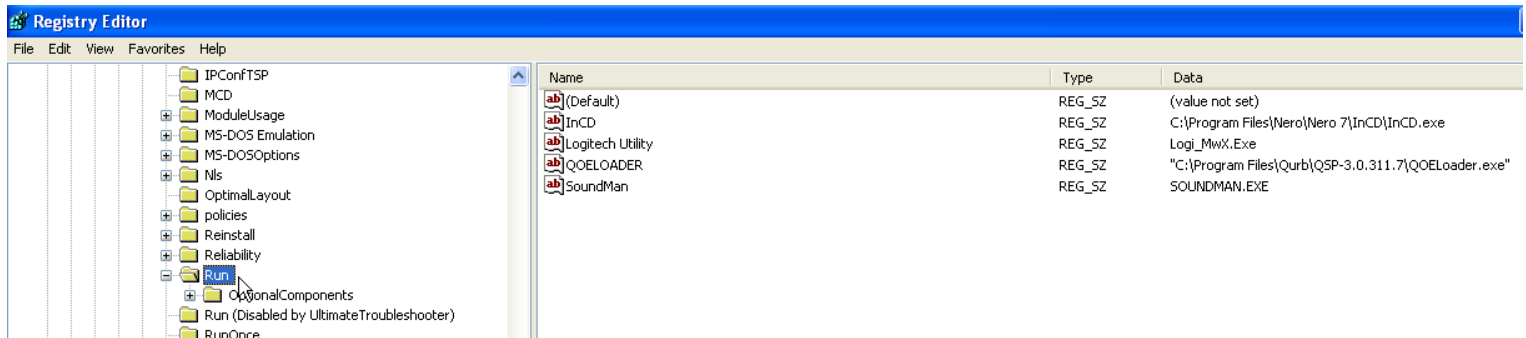


Fig. Startup-05.bmp

*The location of this backup point was selected to illustrate the previous example. Any Registry location can be backed up by highlighting it’s upper level in the path.*

After creating a “System Restore” point & Making a Registry “Export” file, the registry can be modified to remove unwanted entry’s

Continued next page.

# Startup Cleaning

## Editing the Registry:

( Refer to Fig.Startup-06.bmp below )

In the previous example shown on pg.1, the file *Logi\_MwX.exe* was looked up on Google. We'll use this file as an example of a file that may not be needed. ( If for example the system used a different manufacturer for the mouse and this file was determined not to be needed. )

To Remove this entry in MSCONFIG – Startup....

In the right side of the window, select and Right-Click on.. [ Logitech Utility ] select.. [ Delete ] [ Yes ] Close Registry Editor.

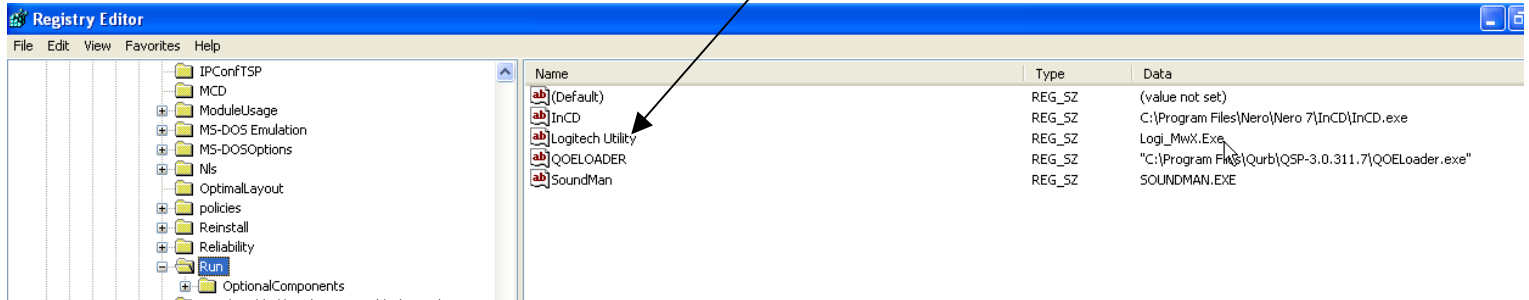


Fig.Startup-06.bmp

Open [ MSCONFIG ] [ Startup ](tab) The entry *Logi\_MwX.exe* should be gone.

## Restoring Registry:

It can be returned to previous condition by locating the Registry Export file and double-clicking on it. When asked click... [ Yes ] [ ok ]

The entry should be returned to MSCONFIG – Startup.

The entry in the Registry should also be replaced.

## General Info:

The preceding example illustrates the procedure for creating backup's prior to editing the Registry.

The decision process as to which entry in MSCONFIG can be removed is unique to each computers setup and programs installed.

Use of the GOOGLE search, to gain understanding of what each file does, is crucial to making the decision to keep or remove an entry.

It's really helpful to have a thorough understanding of where a particular program is located on the computer. The path shown under the " Command " section in MSCONFIG shows the location of that particular program.

If not sure as to which entry to remove, just uncheck that entry and run the computer for a while. Especially the programs associated with that particular entry.

It's been my experience that most entry's in MSCONFIG can be removed with out adverse effects. However if a special function is used, it may be better to leave that entry as is. If not sure just uncheck it. It can always be rechecked to restore that function.

.It may be a pain to make "System Restore" points and " Registry Exports" but it's better to be safe than sorry.