

Windows Media Player V-10 Instructions

General Instructions for Windows Media Player Ver. 10

Scan and Display music in H.D. Directories: (Ref. Fig.WMP-01.bmp below.)

Open Windows Media Player. [Tools] [Options] [Library](tab)

Under “Update Library by Monitoring Folders” click on [Monitor Folders](button)

Display “Advanced Options” by clicking on.. [Advanced Options](button)

In the “Add To Library” window, click [Add] and select the folder / sub-folder to be scanned for music. [ok]

The selected directory and all sub directories will be scanned for music. When done click [Close]

Close “Options” window by clicking.. [ok]

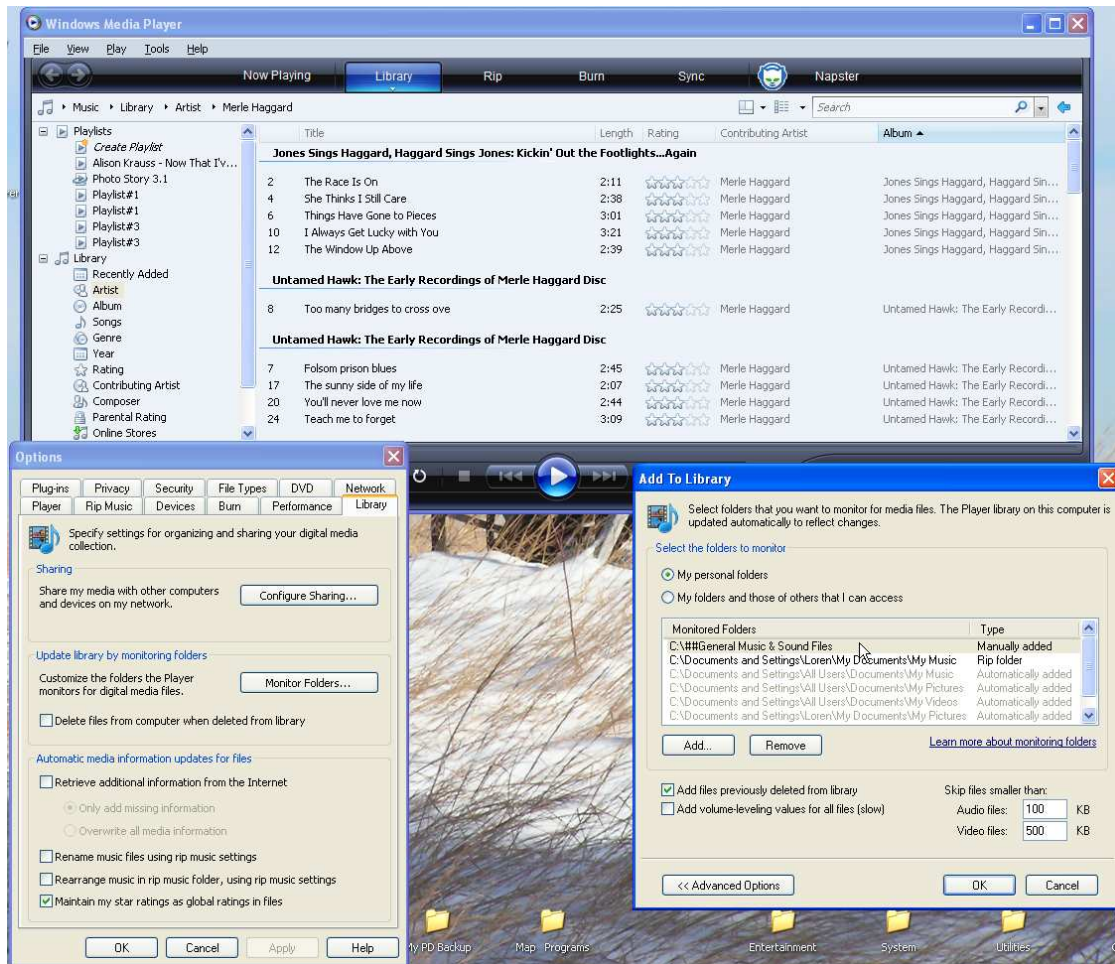


Fig.WMP-01.bmp

Windows Media Player V-10 Instructions

Setting The View Modes:

[View] [Full Screen Mode]



Fig.WMP-03.bmp

[View] [Skin Mode]



Fig.WMP-02.bmp



Fig.WMP-FullScreenMode.bmp



Fig.WMP-SkinMode.bmp

To Switch to Compact Mode..



Compact Mode:



Fig. WMP-CompactMode.bmp

Click here
To switch to return to
Full Mode

To Switch to Full Mode..



To Switch to Compact Mode..



To Setup "Standard" View. Fig.WMP-FullScreenMode.bmp

Open windows Media Player. Note: If in Skin Mode, switch to Full Mode. (See above.) Otherwise [View] [Full Mode]
In the black tool bar, select [Library] [Music]

R-click on "Library" in the left side of the main window. (Fig.WMP-04.bmp)
Select [Show More Views] to display "Folder" at end of Library list.
Highlight the word "Folder" to display contents of library in folder format as
Shown in .. Fig.WMP-FullScreenMode.bmp above.
Select Details View..



Fig.WMP-05.bmp

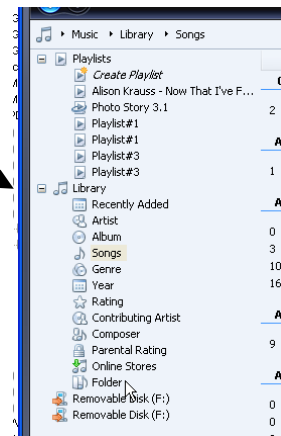


Fig.WMP-04.bmp

Navigate to directory that contains the desired music.
Use the Back/Forward buttons to navigate as required.

Windows Media Player V-10 Instructions

Working with Playlist's:

Creating a New Play List.

Open Windows Media Player and display as shown in Fig.WMP-09.bmp

If "Play List Pane" is not showing, click on [Show List](button) to open.



Fig. WMP-09.bmp

Click on [Untitled Playlist](button) and Select [Rename Playlist] Type in a name for the new Play List. [Ent]

In the Music list area, select the songs to be added to the Play List.

Pick'N Drag to the Play List area at right or R-Clk on the selected songs and [Add To 'name of playlist']

First song begins to play. [Stop] if desired. (Single or multiple songs can be selected and put into the playlist.)

Songs can be moved Up or Down by selecting and dragging to new location.

When done, Save by clicking on [Save Playlist] (button) in right hand playlist section. The playlist name appears under Playlists at left.

Editing a Playlist:

Select the playlist to be edited, R-Clk. On it and select [Edit In List Pane] Select songs and copy to the list showing in the "Play List Pane"

At the right. Move as desired and resave. Typical Play List

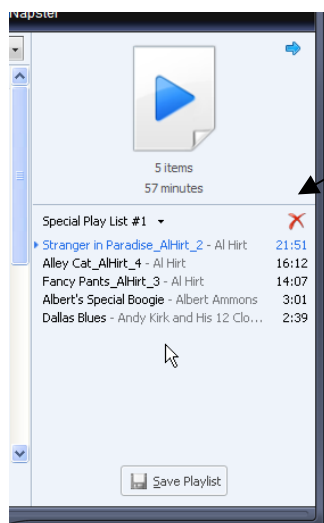


Fig. WMP-07.bmp